

4G LTE

# 4G LTE Wall Mount Antenna

## UMB-W9411



Frequency :700~2700MHZ

Gain : 5.6dBi

Connector : SMA/Male (Optional)

V.S.W.R : <1.5:1

Impedance : 50 ohm

Cable : RG58 3M (Optional)

Weight:250g

Material : ABS Polymer

Polarization: Vertical

Color: Black

Mounting : L Type Mount

Temperature: -20°C to +80°C

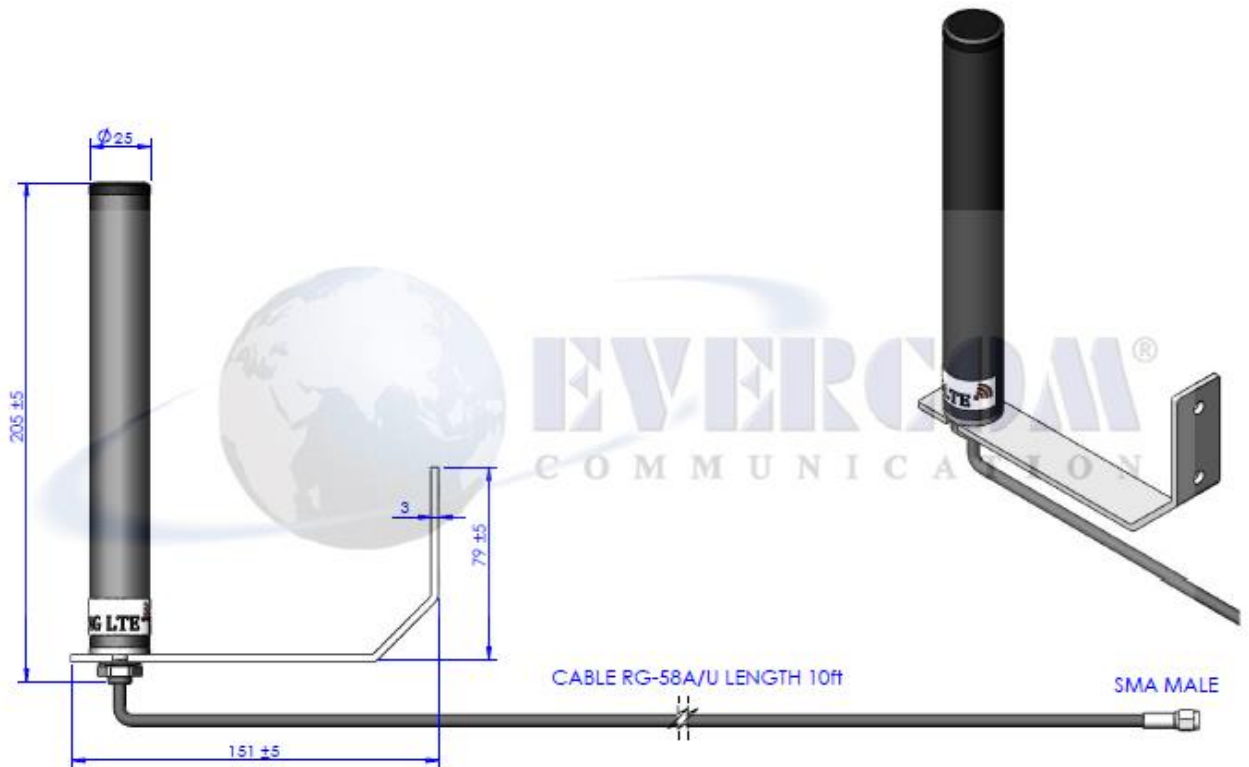
Max. Power: 50W

Dimension:  $\phi$ 205 x 25mm

© 2016 EVERCOM COMMUNICATIONS TECHNOLOGY CO., LTD.

No.108 Jiesin St. Taoyuan District Taoyuan City 33063, Taiwan R.O.C.

Tel: +886-3-376-5678 Fax: +886-3-376-5319 E-Mail: [service@evercomtech.com](mailto:service@evercomtech.com)



EVERCOM COMMUNICATION TECHNOLOGY CO., LTD

CHECKED BY

APPROVAL BY

DESIGNED BY

SCALE

UNIT

MODEL NAME

MODEL NO.

UMB-W9411/58SM3

*Ben*  
20150717

C.H.C  
2014.11.24

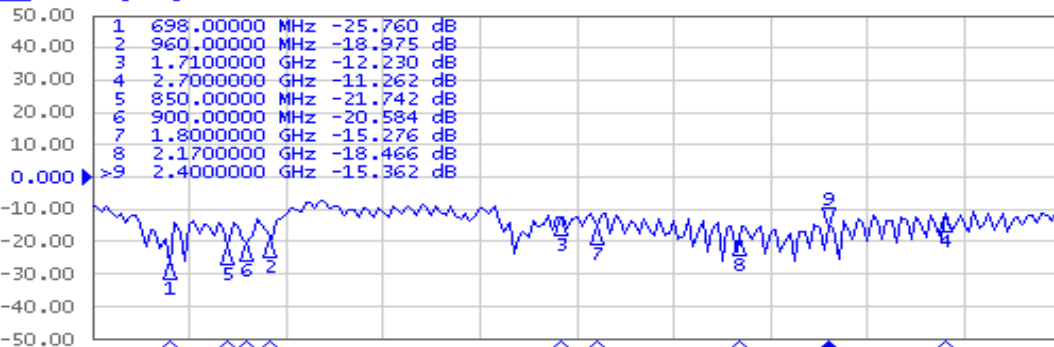
1 : 2

mm

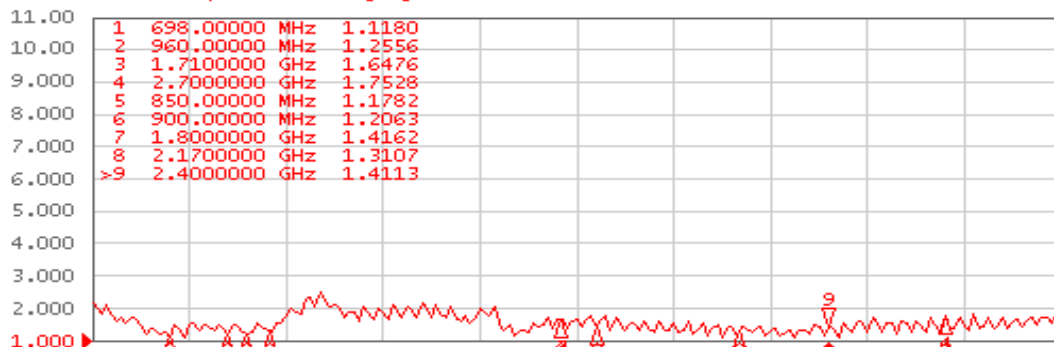
1 Active Ch/Trace 2 Response 3 Stimulus 4 Mkr/Analysis 5 Instr State

Evercom Communication Technology Co., Ltd.

▶ Tr1 S11 Log Mag 10.00dB/ Ref 0.000dB [RO]



Tr2 S11 SWR 1.000/ Ref 1.000 [RO]



1 Start 500 MHz

IFBW 70 kHz

Stop 3 GHz Cor !

Response (Open)  
85033E

Select Port

1 \*

Open

Open

Load (Optional)

Broadband

Done

Cancel

Return

# S11 Passive Measurement

700MHz + GSM (LTE) antenna

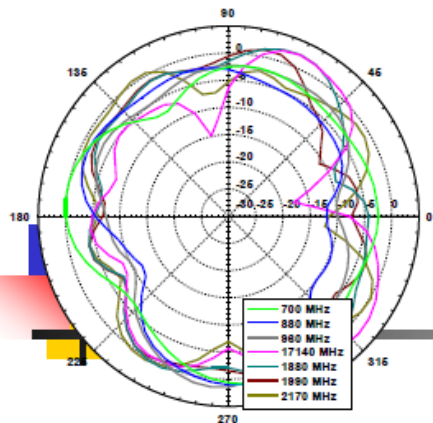


S11

- S11 700MHz : -10.301 dB
- 960MHz : -9.7248 dB
- 1710MHz : -12.493 dB
- 2170MHz : -9.4082 dB

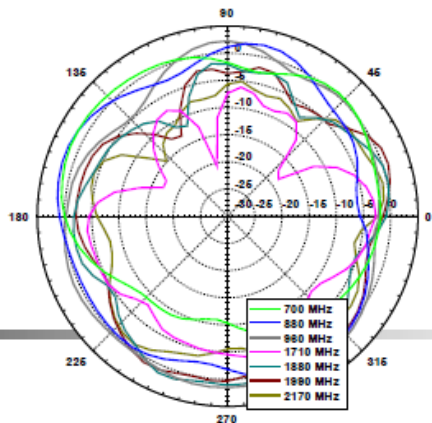


## Passive Measurement ( gain and pattern)



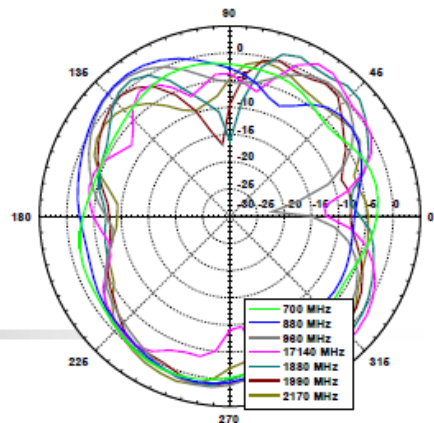
Total power	Max (dBi)	Min (dBi)	Average (dBi)
700	1.16	-7.68	-2.26
880	1.05	-12.78	-3.42
960	1.56	-10.20	-2.85
1710	2.44	-17.67	-2.24
1880	2.52	-9.28	-1.70
1990	1.32	-10.69	-2.71
2170	0.56	-12.17	-2.62

XY



Total power	Max (dBi)	Min (dBi)	Average (dBi)
700	1.67	-10.87	-1.86
880	2.15	-6.06	-0.46
960	2.23	-4.70	0.03
1710	-2.72	-20.57	-5.66
1880	1.53	-11.79	-2.44
1990	1.07	-12.99	-1.86
2170	-0.81	-14.83	-3.44

XZ



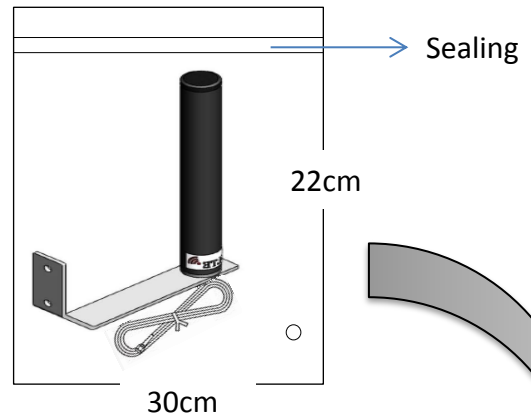
Total power	Max (dBi)	Min (dBi)	Average (dBi)
700	0.81	-5.65	-2.12
880	2.20	-7.80	-1.78
960	1.85	-22.17	-1.94
1710	2.34	-12.59	-2.13
1880	2.25	-16.19	-1.09
1990	1.29	-16.71	-2.27
2170	1.93	-9.62	-2.53

YZ

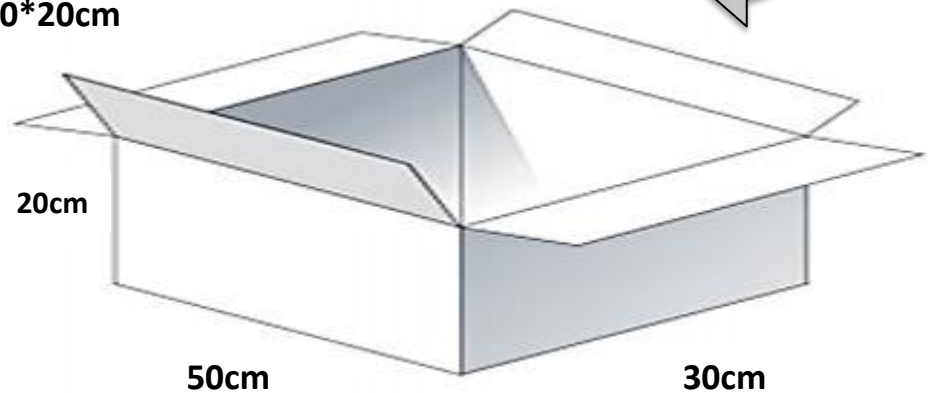
4G LTE

# Packaging

**\*1 pcs Antenna with Bracket  
PE bag/ each**



**\*25 pcs Bulk /per carton  
Carton Dimensions:50\*30\*20cm**





**4G LTE**



# Antenna Applications

