

**CB & VHF/UHF
Series**



The World Wide Leader in Antenna

CB ANTENNA

CB-2323UP



Frequency : 26-28Mhz

V.S.W.R : <1.5:1

Max Power: 500W

Impedance : 50 Ohm

Material : ABS/SUS

Mount: M Type

Weight: 240g

Dimension: 1490x34mm

Polarization: VERTICAL

Temperature:-20°C to +60°C

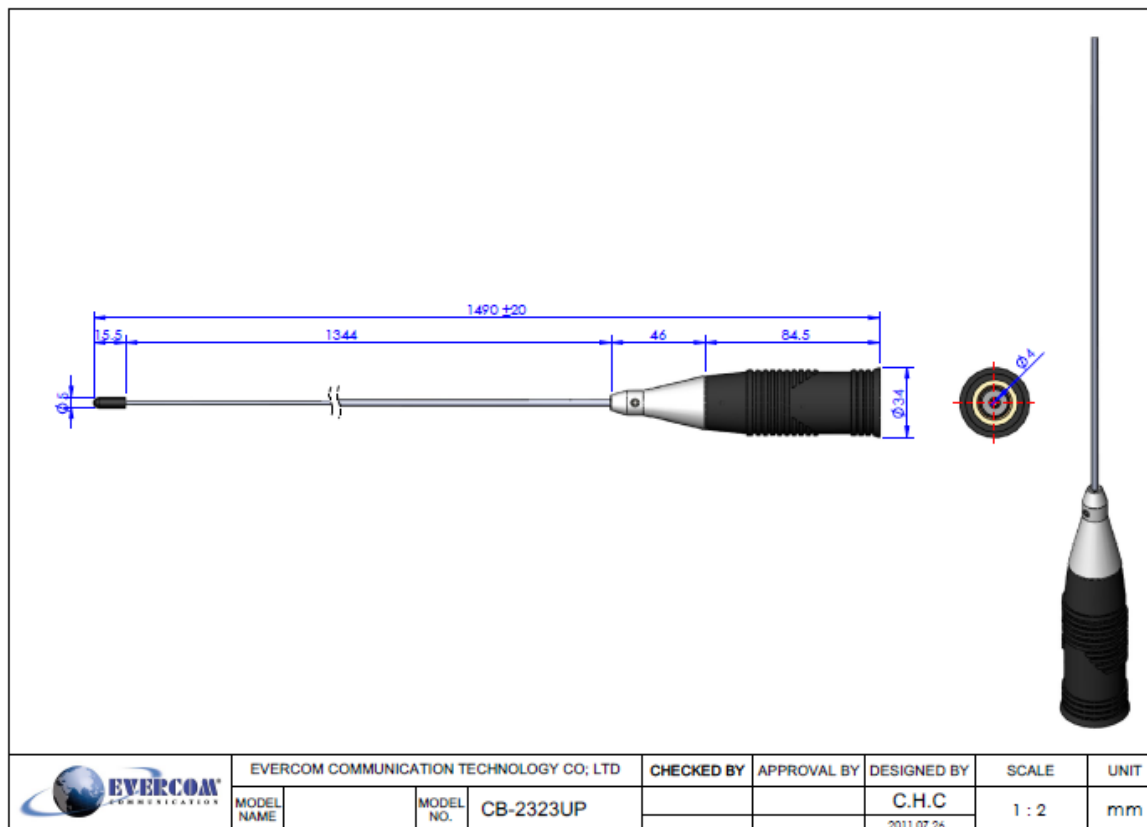
EVERCOM COMMUNICAITON TECHNOLOGY CO., LTD.

No.108 Jiesin St. Taoyuan District Taoyuan City 33063, Taiwan R.O.C.

Tel: +886-3-376-5678 Fax: +886-3-376-5319 E-Mail: service@evercomtech.com



ISO 9001



1 Active Ch/Trace 2 Response 3 Stimulus 4 Mkr/Analysis 5 Instr State

▶ Tr1 S22 Log Mag 10.00dB/ Ref 0.000dB [F1]

1	26.000000 MHz	-5.4502 dB
2	28.000000 MHz	-14.916 dB
3	27.000000 MHz	-6.1841 dB
>4	27.500000 MHz	-11.069 dB



Tr2 S22 SWR 1.000/ Ref 1.000 [F1]

1	26.000000 MHz	3.2913
2	28.000000 MHz	1.4377
3	27.000000 MHz	2.9268
>4	27.500000 MHz	1.7763



1 Center 27 MHz

IFBW 70 kHz

Span 5 MHz

Cor

Meas

Stop

ExtRef

Ready

Svc

2008-09-16 15:03

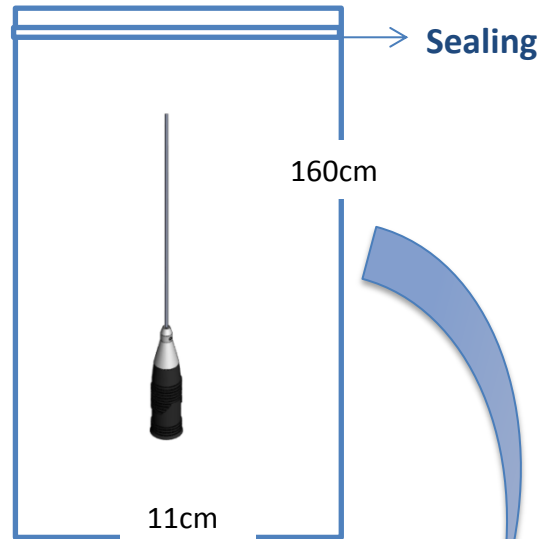
CB & VHF/UHF Series



The World Wide Leader in Antenna

Packaging

***1 pcs Antenna PE bag/ each**



***50 pcs Bulk /per Carton
Dimensions:160*20*20cm**

