

**CB & VHF/UHF
Series**



The World Wide Leader in Antenna

CB ANTENNA

CB-2307S



Frequency : 26-28Mhz

V.S.W.R : <1.2:1

Max Power: 1000W

Impedance : 50 Ohm

Material : ABS/ZINC/SUS

Mount : \varnothing 16mm , "S0239"

Connector : PL259 (Optional)

Weight : 800g

Dimension : 1900 x 38mm

Color : Black

Polarization : Vertical

Temperature : -20°C to +60°C

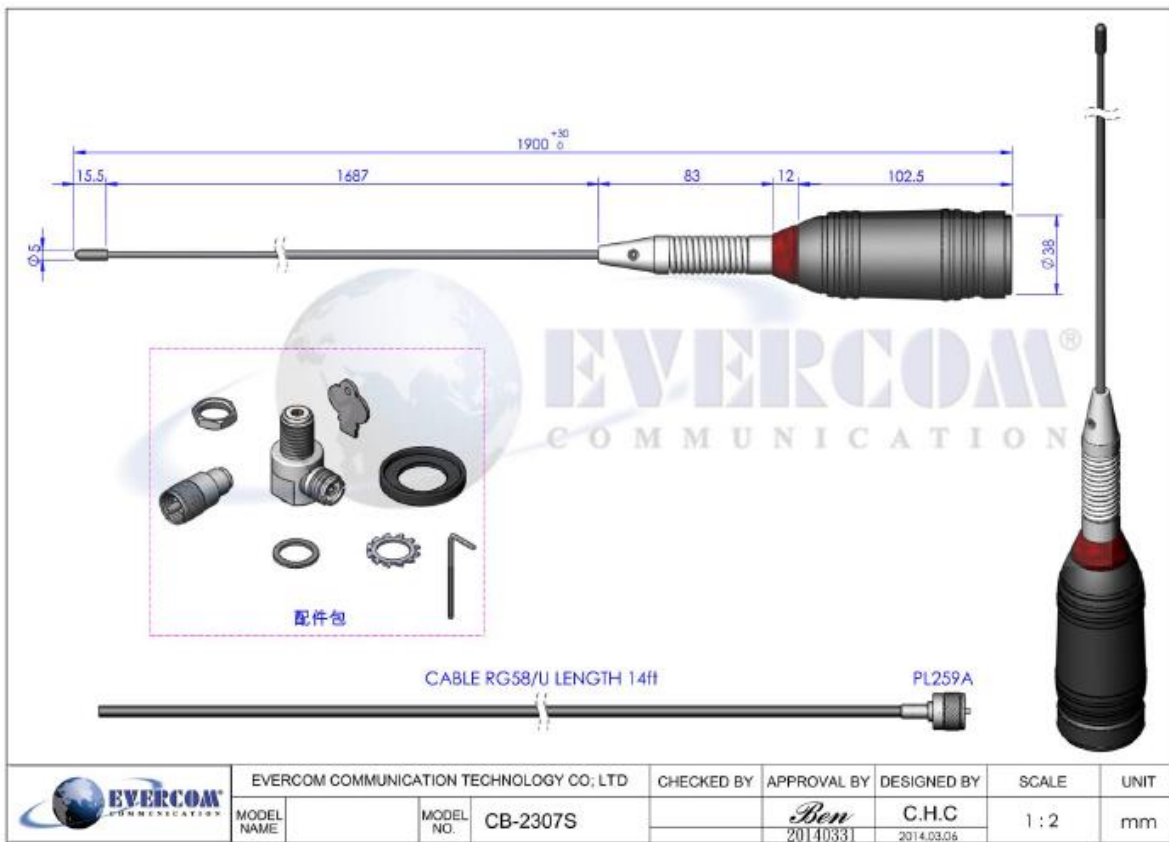
EVERCOM COMMUNICAITON TECHNOLOGY CO., LTD.

No.108 Jiesin St. Taoyuan District Taoyuan City 33063, Taiwan R.O.C.

Tel: +886-3- 376- 5678 Fax: +886-3- 376- 5319 E-Mail: service@evercomtech.com

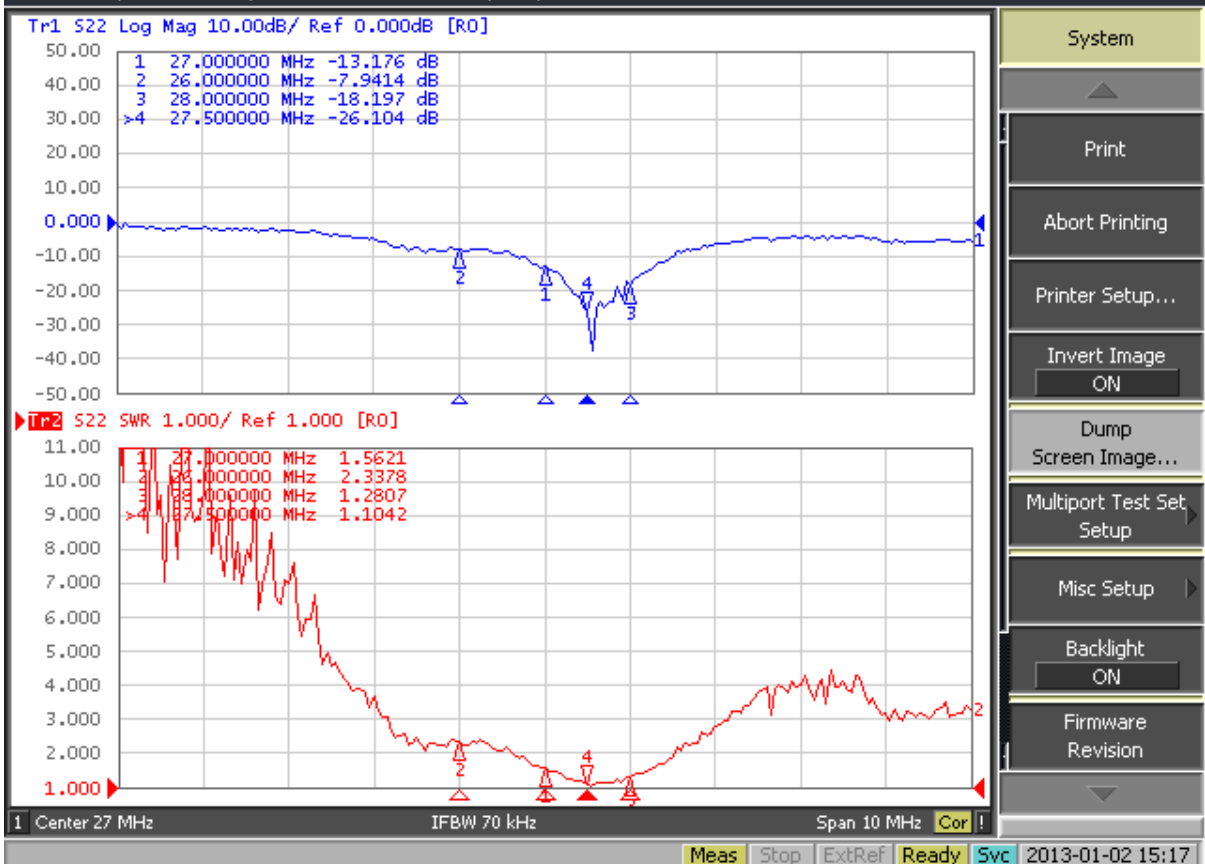


ISO 9001



Evercom Communication Technology Co., Ltd. Frequency Inspection Report

1 Active Ch/Trace 2 Response 3 Stimulus 4 Mkr/Analysis 5 Instr State



Item No. : FG-CB-2307S

Inspector: Amber

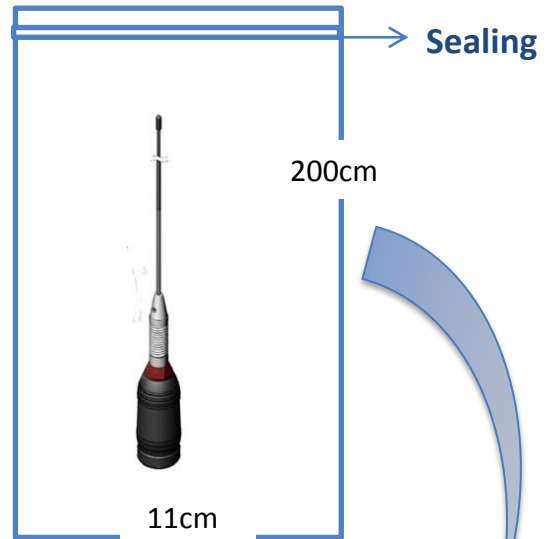
**CB & VHF/UHF
Series**



The World Wide Leader in Antenna

Packaging

***1 pcs Antenna PE bag/ each**



***25 pcs Bulk /per Carton
Dimensions:200*20*20cm**

