

**CB & VHF/UHF
Series**



The World Wide Leader in Antenna

CB ANTENNA

CB-2307



Frequency : 26-28Mhz

V.S.W.R : <1.2:1

Max Power : 1200W

Impedance : 50 Ohm

Material : ABS/ZINC/SUS

Mount : ϕ 16mm , "S0239"

Connector : PL259 (Optional)

Weight : 840g

Dimension : 1910 x 43.80mm

Color : Black

Polarization : Vertical

Temperature : -20°C to +60°C

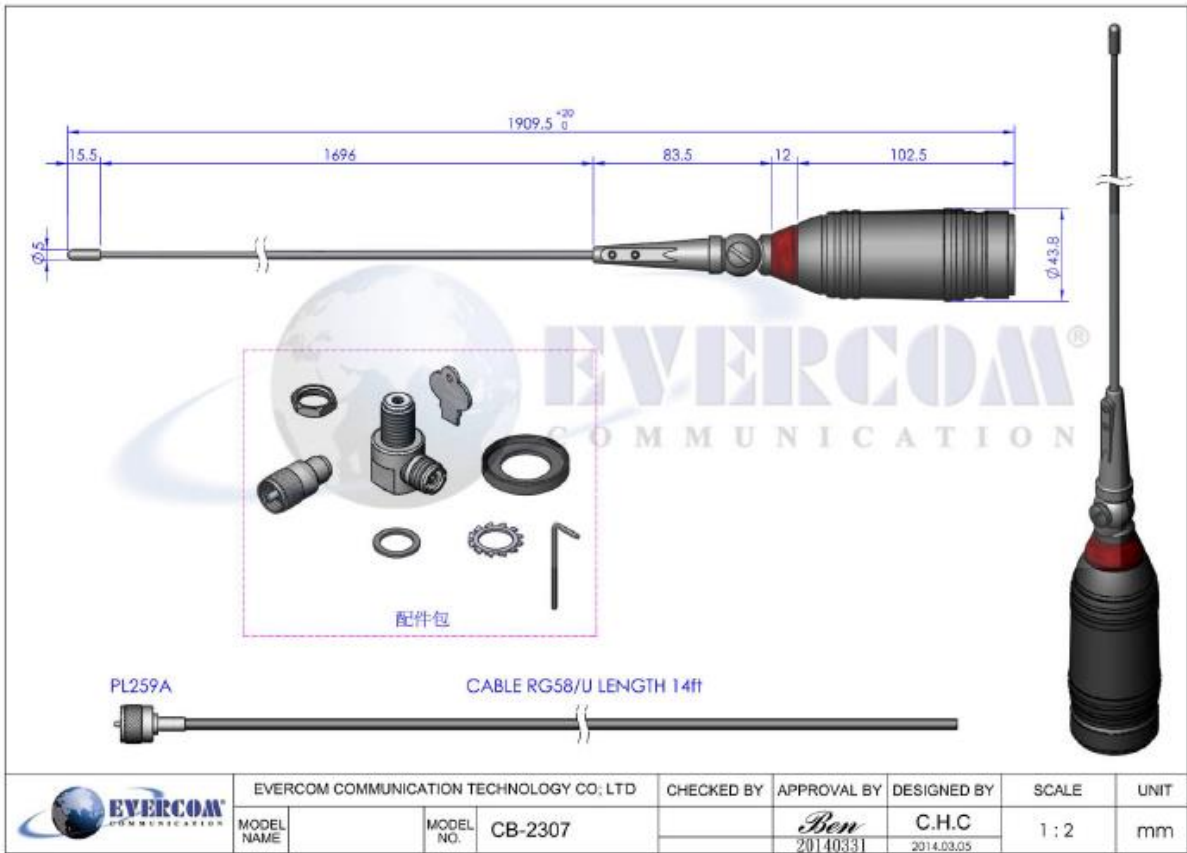
EVERCOM COMMUNICAITON TECHNOLOGY CO., LTD.

No.108 Jiesin St. Taoyuan District Taoyuan City 33063, Taiwan R.O.C.

Tel: +886-3-376-5678 Fax: +886-3-376-5319 E-Mail: service@evercomtech.com



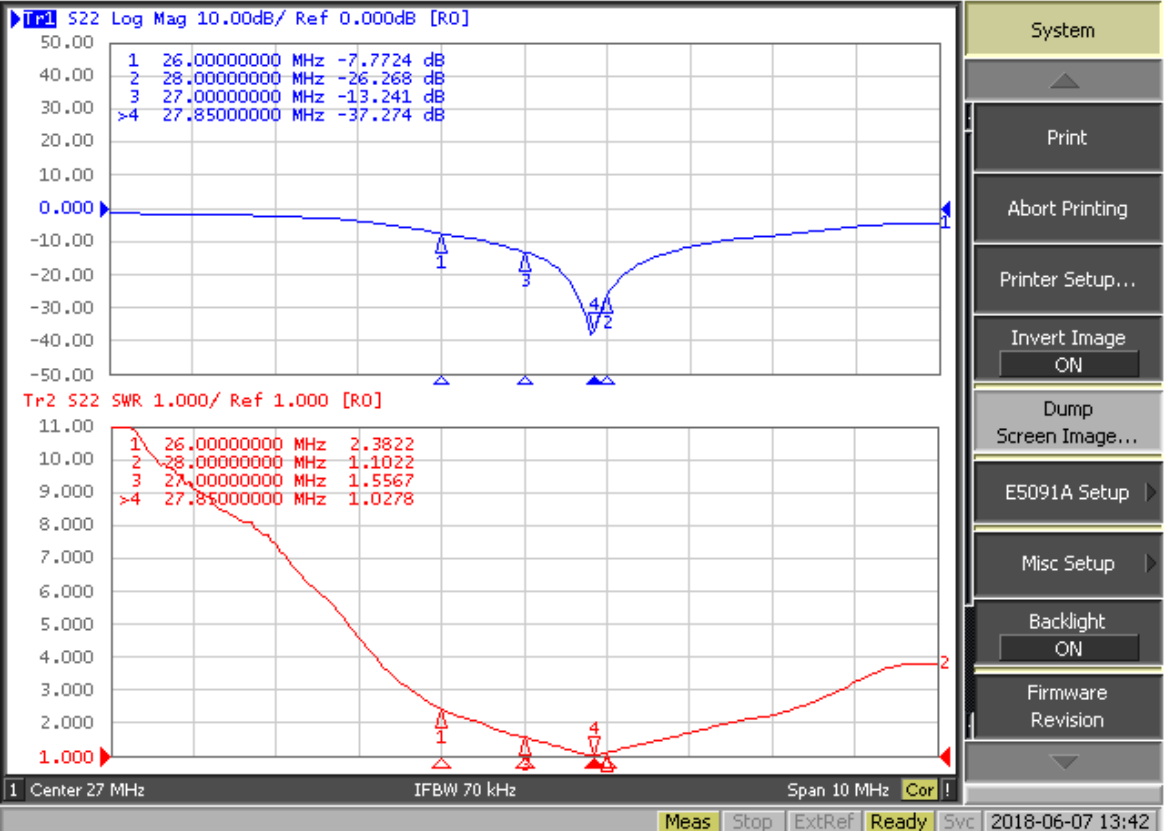
ISO 9001



	EVERCOM COMMUNICATION TECHNOLOGY CO., LTD			CHECKED BY	APPROVAL BY	DESIGNED BY	SCALE	UNIT
	MODEL NAME	MODEL NO.	CB-2307		<i>Ben</i> 20140331	C.H.C 2014.03.05	1:2	mm

Evercom Communication Technology Co., Ltd. Frequency Inspection Report

1 Active Ch/Trace 2 Response 3 Stimulus 4 Mkr/Analysis 5 Instr State



System

Print

Abort Printing

Printer Setup...

Invert Image ON

Dump Screen Image...

E5091A Setup

Misc Setup

Backlight ON

Firmware Revision

Meas Stop ExtRef Ready Svc 2018-06-07 13:42

Item No. :FG-CB-2307

Inspector: Amber

**CB & VHF/UHF
Series**



The World Wide Leader in Antenna

Packaging

***1 pcs Antenna PE bag/ each**



***10 pcs Bulk /per Carton
Dimensions:200*20*10cm**

